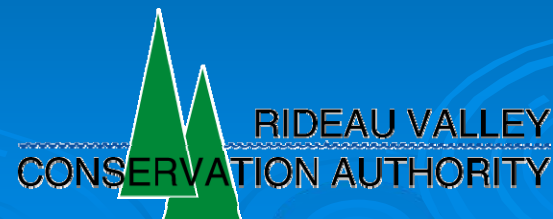


# Lake Management Planning in the Rideau Valley Watershed

Forum National Sur les Lacs

June 5, 2008

Lynn Preston  
Watershed Planning Co-ordinator

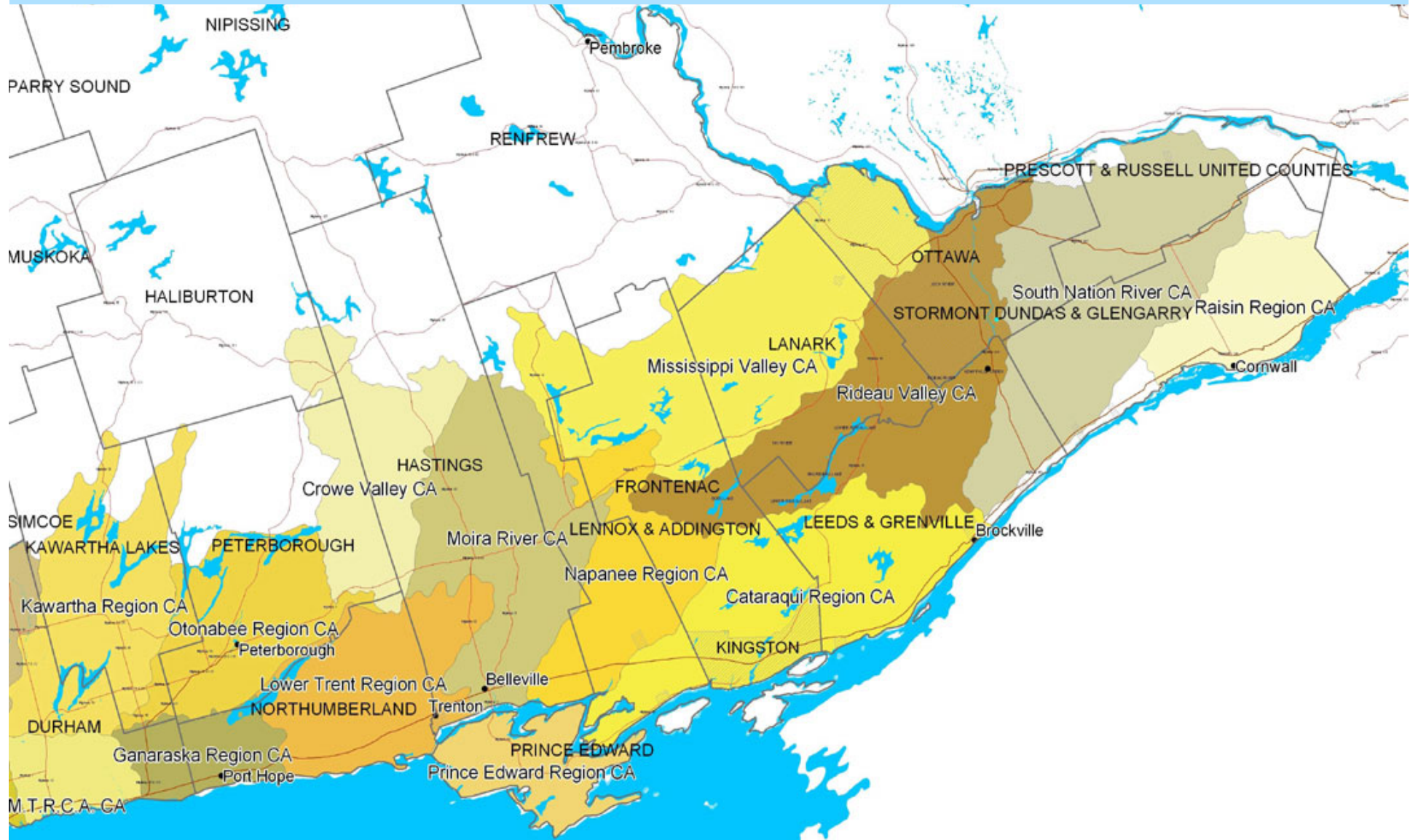


# Conservation Authorities in Ontario



- 36 in Ontario
- Protect and manage water and other natural resources
- Partnership of Municipalities
- Watershed Jurisdiction
- Shared Funding
- Board of Directors
- Municipal Control

# Eastern Ontario Conservation Authorities





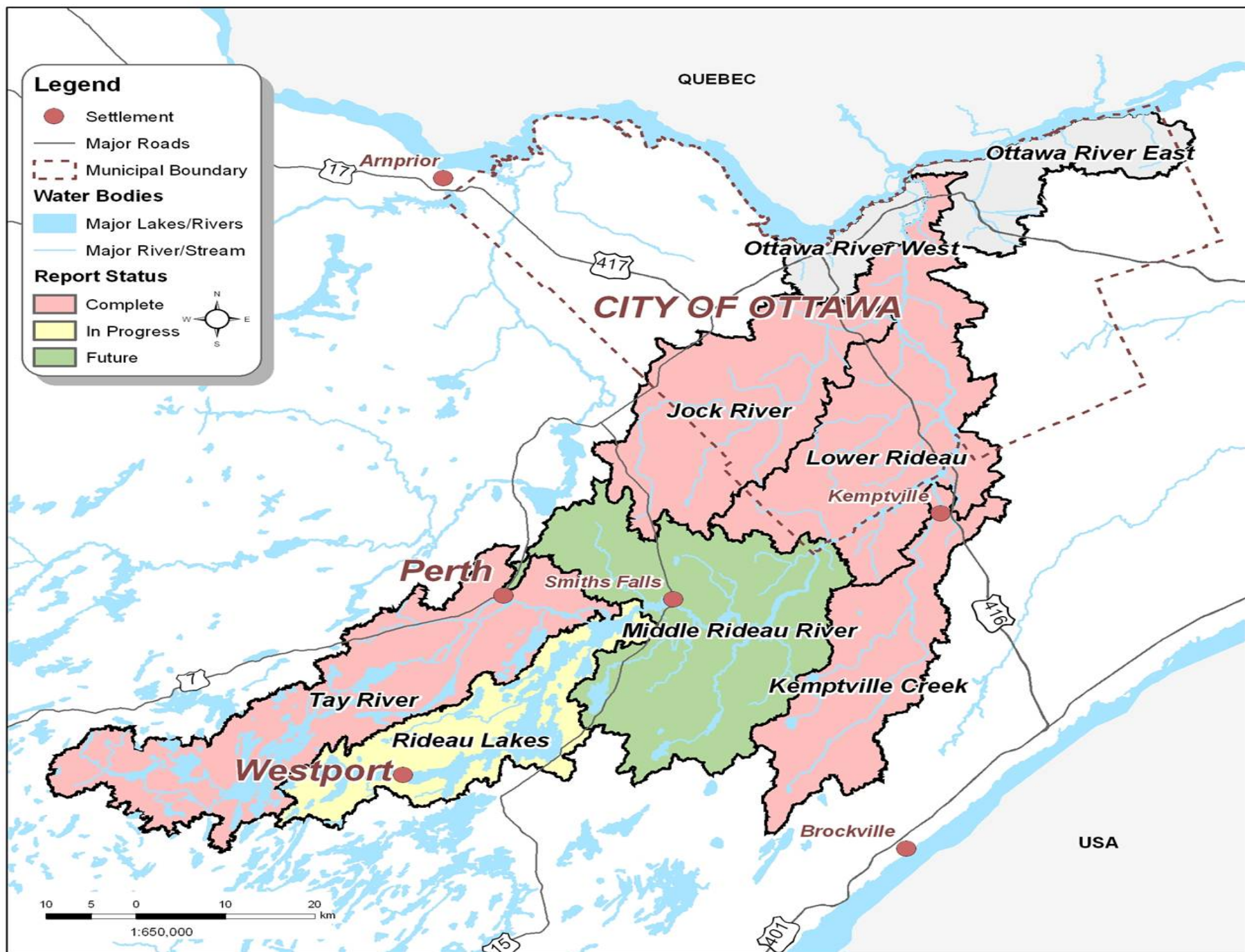
# RVCA Programs

- Watershed Planning, Monitoring and Reporting
- Planning Advisory and Regulatory Services
- Stewardship Services
- Conservation Land Management
- Corporate Services



# Watershed Planning – Rideau Valley

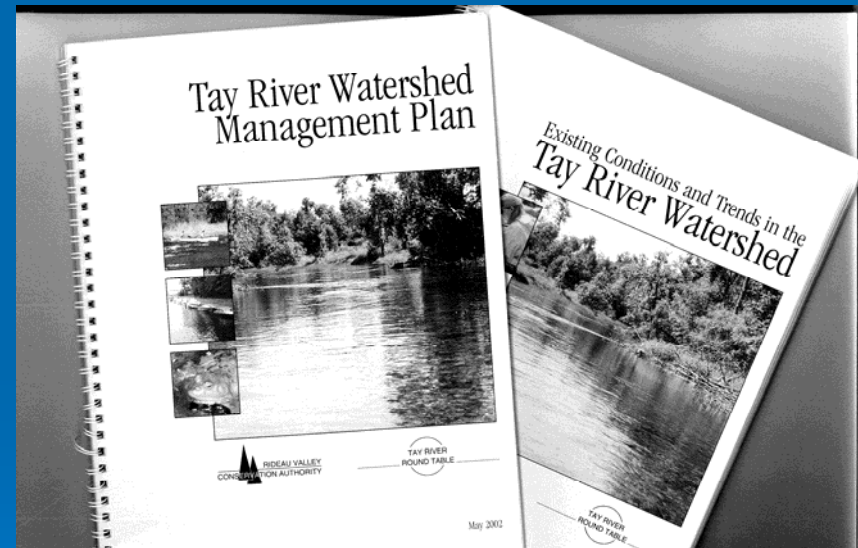
- Goal to complete plans on all 6 major tributaries of Rideau system
- Plans are ecosystem approach to land use planning
- Living documents developed co-operatively by the watershed community
- An identification of the community's vision of the natural environment of the future
- An identification of areas of future development and constraint





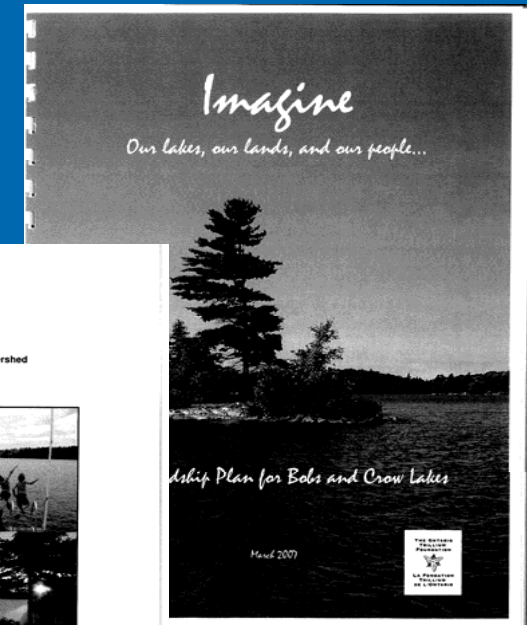
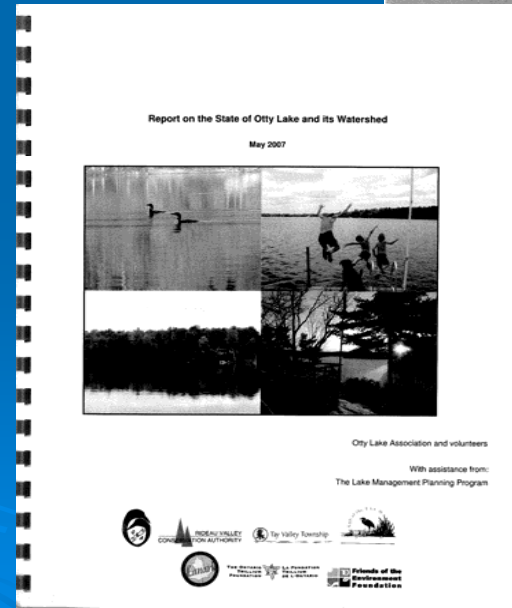
# Tay River Watershed Plan

- Major tourism area of Eastern Ont.
- 42 lakes - healthy watershed now, development pressures increasing
- Recommendation of TRWP to undertake Lake Management Plans



# Lake Management Planning in Eastern Ontario

- \$100,000+ Trillium Grant – Charleston Lake 2002
- \$71,000 Trillium Grant – Bobs and Crow Lakes 2004
- \$96,000 Trillium Grant - Lake Management Planning Program – Tay River Watershed 2005





# LMP Program in Rideau Valley

- Driven by Friends of the Tay - applies to the Tay River watershed
- 3 year \$96,000 Trillium Foundation grant to undertake 3 LMPs in 3 years
- Partners: Friends of the Tay River (lead group), RVCA (main tech supporter), MNR, Tay Valley Township, Otty Lake Association, DFO



# The Lake Management Planning Program

- Managed by a steering committee
- Provides guidance to lake groups
- Customized assistance for 3 lakes
- Majority of LMP work carried out by lake groups



# What is a Lake Management Plan (LMP) ?

- It's a *Strategic Action Plan* developed by the community to reflect and preserve the special character of your lake





# What Does a Lake Management Plan Do?



- It identifies and protects the lake values
- It promotes community discussion, education, consensus and action
- It sets objectives for the protection and enhancement of YOUR lake



# What Does a Lake Management Plan Do?

- It recommends land use policy
- It recommends stewardship ACTION



# What Are the Issues?

- Water Quality
- Weed Growth
- Water Levels
- Cottage Density
- Noise
- Fish and Wildlife
- Quality of Life



# What are the Solutions?

- Land Use Regulations  
Official Plan and  
Zoning Bylaw  
policies, Site Plan  
control
- Communication
- Stewardship
- Education
- Septic Re-inspections
- Shoreline  
Rehabilitation
- Ecosystem Monitoring





# Benefits and Outcomes of the LMPP

- Empowers lake residents
- Provides the opportunity for lake residents to work together
- Identifies: values; collective vision; roles in lake protection





# Benefits and Outcomes of the LMPP

- Increases communication between lake groups and stakeholder agencies
- Raises awareness of lake issues to all players



BUT.....

What Next?



# Continuation of Program ??

- **May become an RVCA Program**
  - **Expand to include Entire Rideau Watershed**
  - **Continue Project Management assistance to more lake groups**
  - **Train local residents to communicate and engage lake residents**
- 

# Implementation

- **Community-Based Social Marketing**
- **Identify Barriers to Engaging in Stewardship Activities**
- **Develop a shoreline stewardship program to overcome these barriers**
- **Work with partners to develop communication tools and strategies**



# Questions?



# Thank You/Merci

- [www.rideauvalley.on.ca](http://www.rideauvalley.on.ca)
- [Lynn.preston@rvca.ca](mailto:Lynn.preston@rvca.ca)

For more information on our Lake  
Management Planning Program:

- [http://www.rideauvalley.on.ca/programs/LMP\\_Program/index.html](http://www.rideauvalley.on.ca/programs/LMP_Program/index.html)

